

Sacramento County Consultant Report on Jail Alternatives

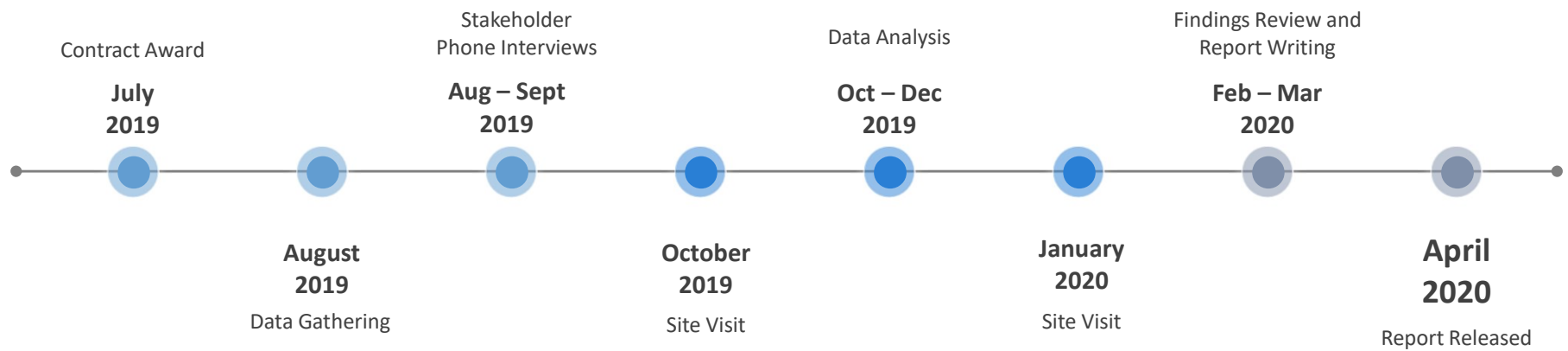
May 12, 2020



Task

Conduct an analysis of Sacramento County's sentenced, incarcerated population to determine if a portion of these individuals could be safely supervised and managed in a setting other than jail.

Timeline



Our Team

Mark Carey



President

Susan Burke



Executive Director

Rebecca McNeese



Pretrial Consultant

Alisha Shoates-James



Jail Alternatives
Consultant



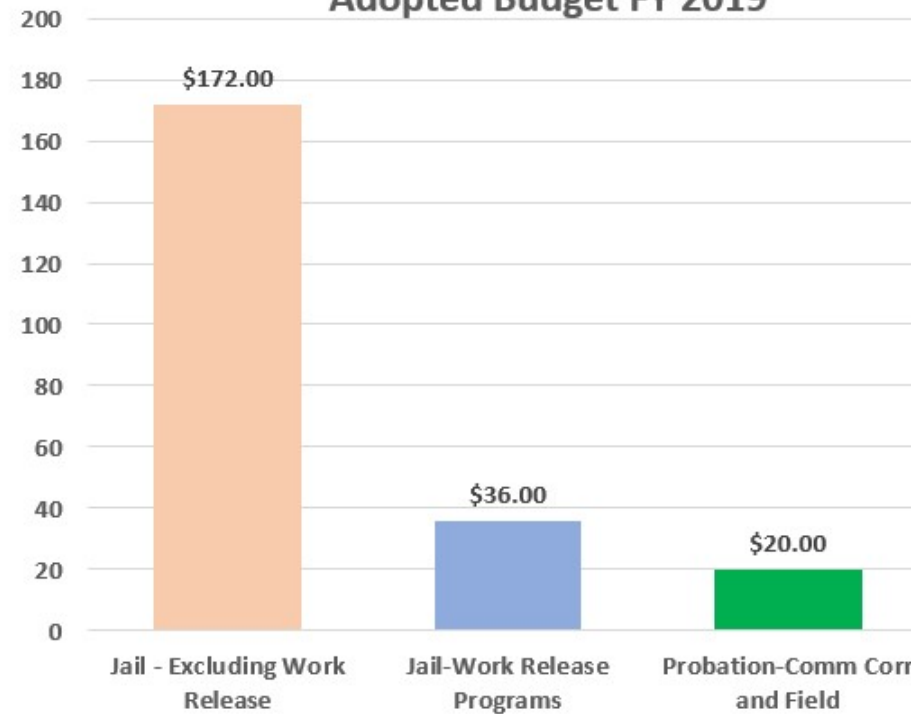
The amount of funding dedicated to the pretrial and post-adjudication population (jail and probation) is notable, with FY 2019 gross expenditures as follows:

\$229,476,017	Jail, excluding work release
\$ 19,105,034	Jail Work Release Programs
\$ 43,650,117	Adult Probation (Community Corrections and Field Services)



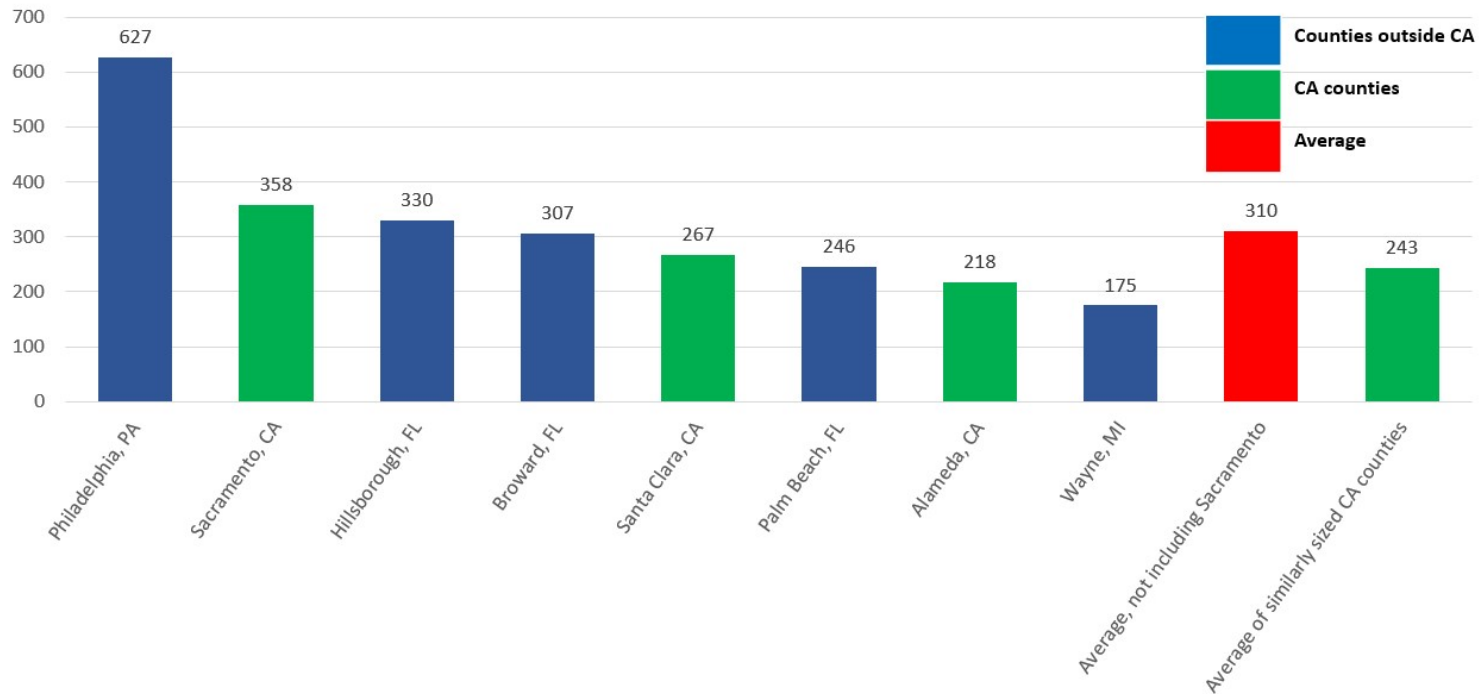
Cost Per Person Per Day

Figure 10: Cost Per Person Per Day by Program;
Adopted Budget FY 2019



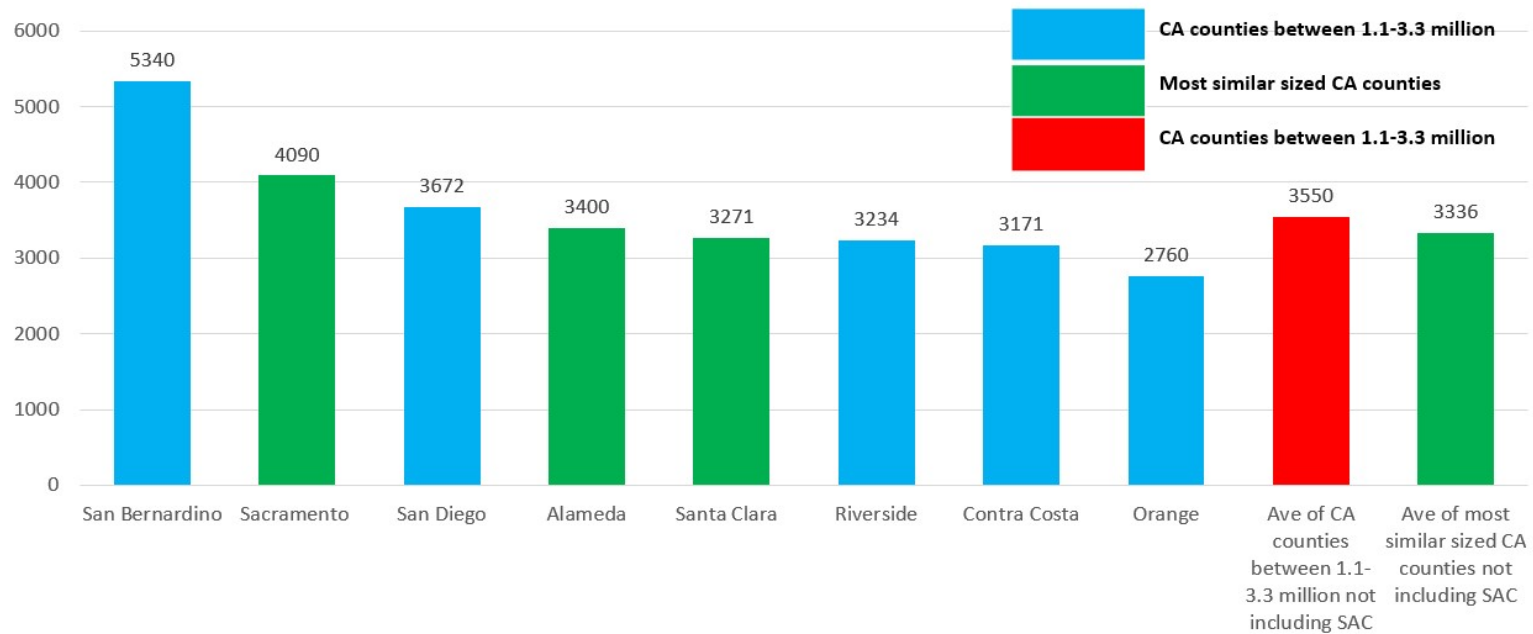
Average Daily Population

Figure 1: 2017 Incarceration (ADP) Rates (per 100,000 Residents Ages 16–64) Comparisons Among Similarly Sized Counties (1.4–2.0 Million Residents)



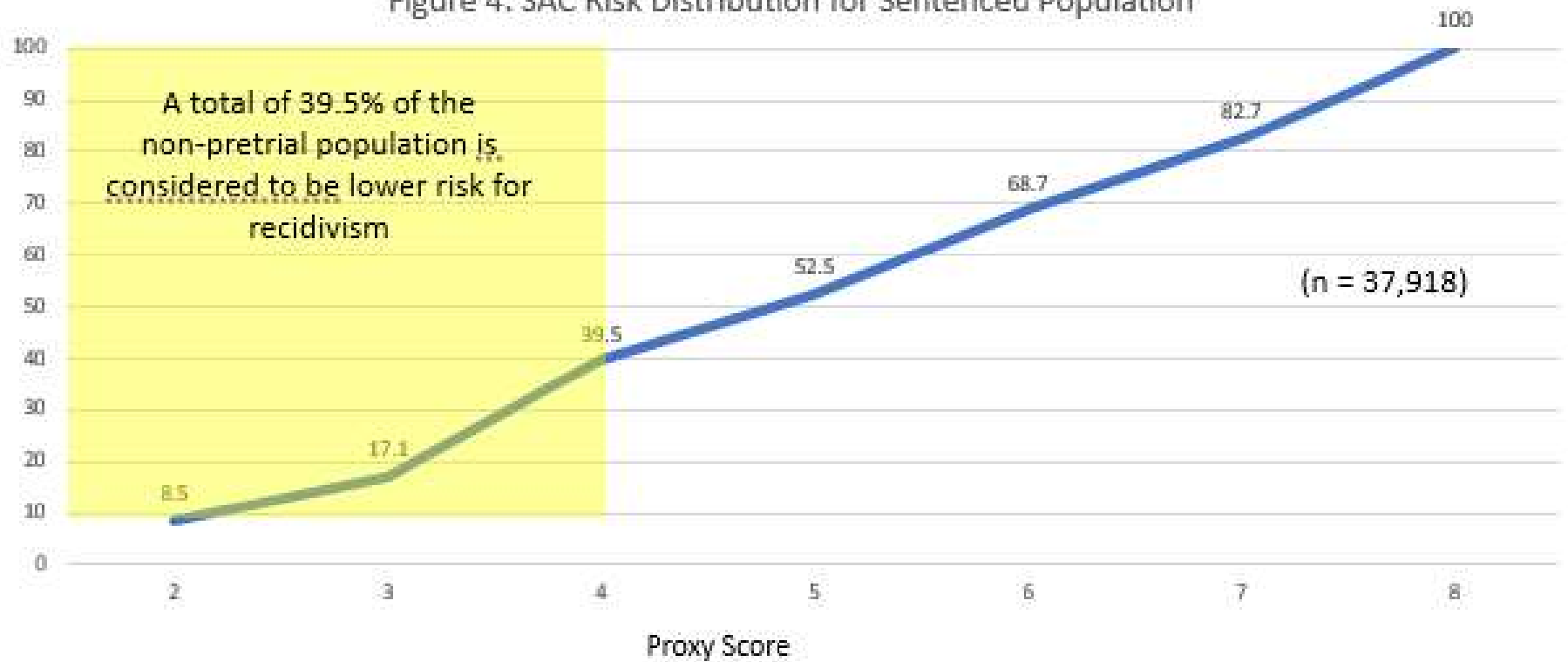
Jail Admission Rates

Figure 2: 2017 Annual Jail Admission Rates (per 100,000 Residents Ages 16-64) Comparisons Among California Counties Between 1.1-3.3 Million Residents



Risk Distribution

Figure 4: SAC Risk Distribution for Sentenced Population

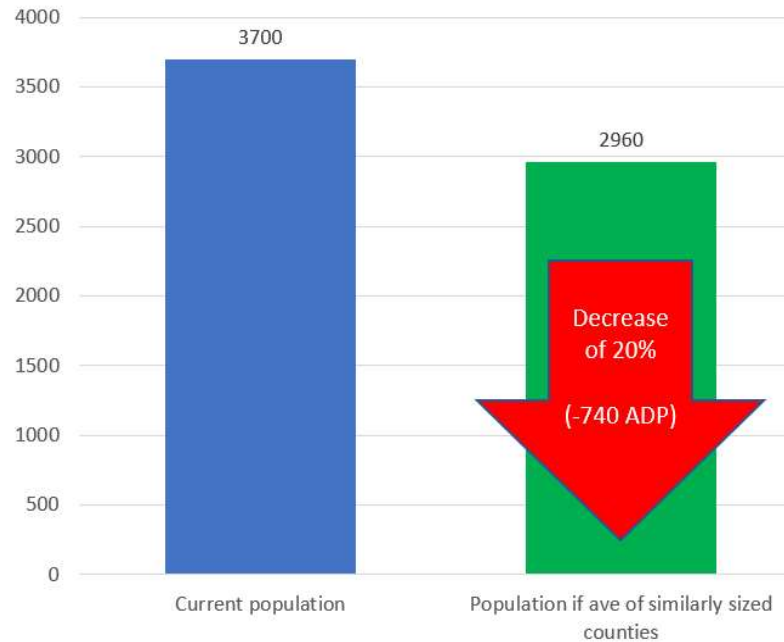


Comparison of Incarceration Rates

Data Measure	Sacramento County Compared to Other Counties
2015 incarceration rate compared to other CA counties (as reported by Carter Goble Associates)	42.5% higher
2017 incarceration rate (per 100,000 residents ages 16–64) compared to similarly sized US counties	15.5% higher
2017 incarceration (per 100,000 residents ages 16–64) compared to similarly sized CA counties	47% higher
2017 admission rates (per 100,000 residents ages 16–64) compared to CA counties between 1.1-3.3 million	15.2% higher
2017 admission rates (per 100,000 residents ages 16–64) compared to similarly sized CA counties	22.6% higher

Aligning ADP With Similarly Sized Counties

Figure 5: Impact of Sacramento County Policy Change:
Aligning ADP with Similarly Sized Counties





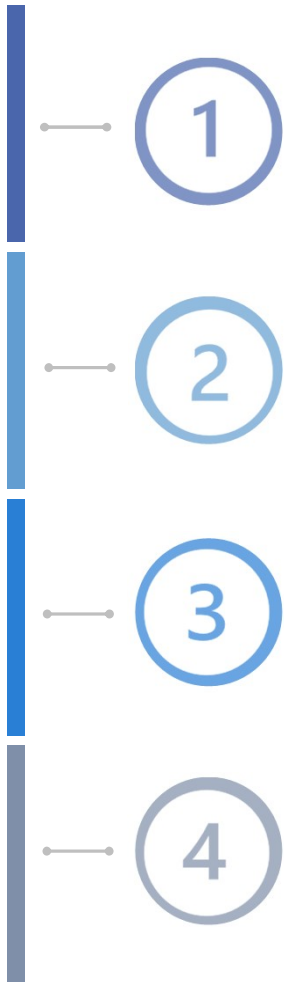
System Strengths

Sacramento County has a high degree of openness and commitment to achieving public safety through innovative means as evidenced, in part, by agencies trying new approaches to better serve the adult offender population and to improve the quality of life for county residents.



Positive Practices Examples

Practice	Description
HOMELESS & MENTAL HEALTH OUTREACH TEAMS	Sacramento police officers collaborate with providers to connect individuals to needed services.
MOBILE CRISIS SUPPORT TEAMS	Specialists go to individuals in crisis to help resolve problems thus avoiding unnecessary hospitalization.
JAIL ALTERNATIVE PROGRAMS	Individuals serve their sentences in the community while completing work projects.
GOOD TIME CREDIT	Individuals receive 50% credit for jail stays upon entry to incentivize good behavior and program participation.
RCCC EBP PROGRAMMING	Incarcerated inmates receive evidence-based services to address identified criminogenic needs.
FLASH INCARCERATION	Those who violate probation receive short-term, rather than long-term, jail stays.
ADULT DAY REPORTING CENTERS	Probationers receive evidence-based programs to address identified criminogenic needs and connect with support services.
COMMUNITY PARTNERSHIPS	Community-based organizations provide justice-involved individuals with services that they are uniquely qualified to provide, such as mentorship and support.



1

Policies and Practices

With additional community-based services, long-standing policies and practices could be changed without negatively impacting community safety.

2

Pretrial Initiative

Pretrial holds should reduce under this initiative, which is grounded in effective practices and research.

3

Lower Risk Sentenced Population

A large percentage of the sentenced population are lower risk and could likely be managed in the community without detriment to public safety, if provided with sufficient services.

4

Openness to Change

Most stakeholders support the view that the system cannot continue to operate as it is currently operating without consuming a disproportionate amount of the county budget.

Recommendations



Adopt a systematic approach to criminal justice planning



Make pretrial the priority



Adopt a universal risk screening tool



Expand existing, successful programs



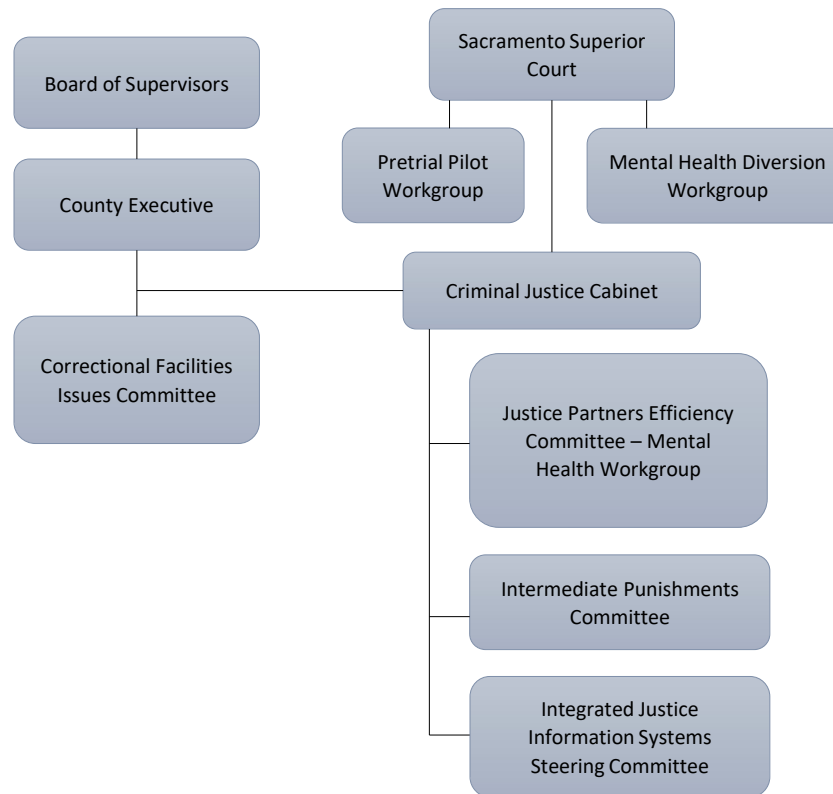
Increase support services



Put in place an ongoing continuing education series



Adopt a systematic approach to criminal justice planning



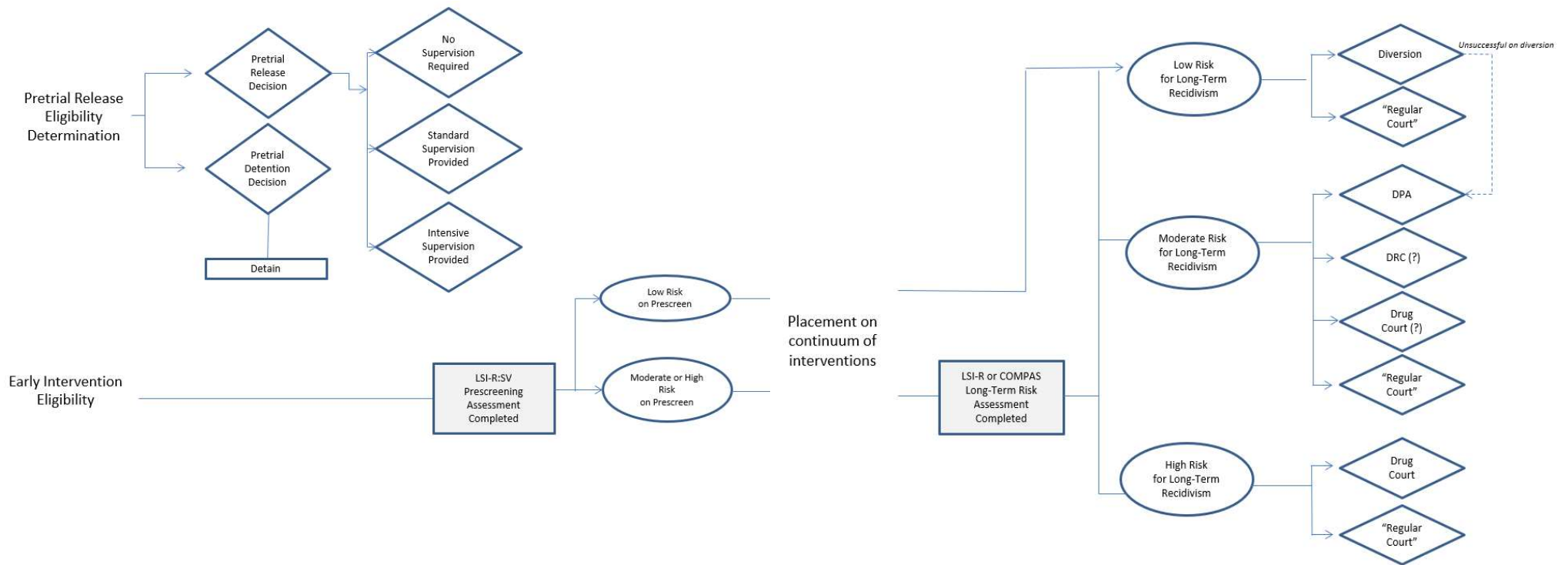


Make pretrial the priority

- Continue efforts to adopt appropriate, additional screening tools to identify specific risk factors
- Establish a sequential bail review process
- Collect and regularly review the data across agencies
- Adopt a county-wide automated court date notification system
- Expand the use of citation

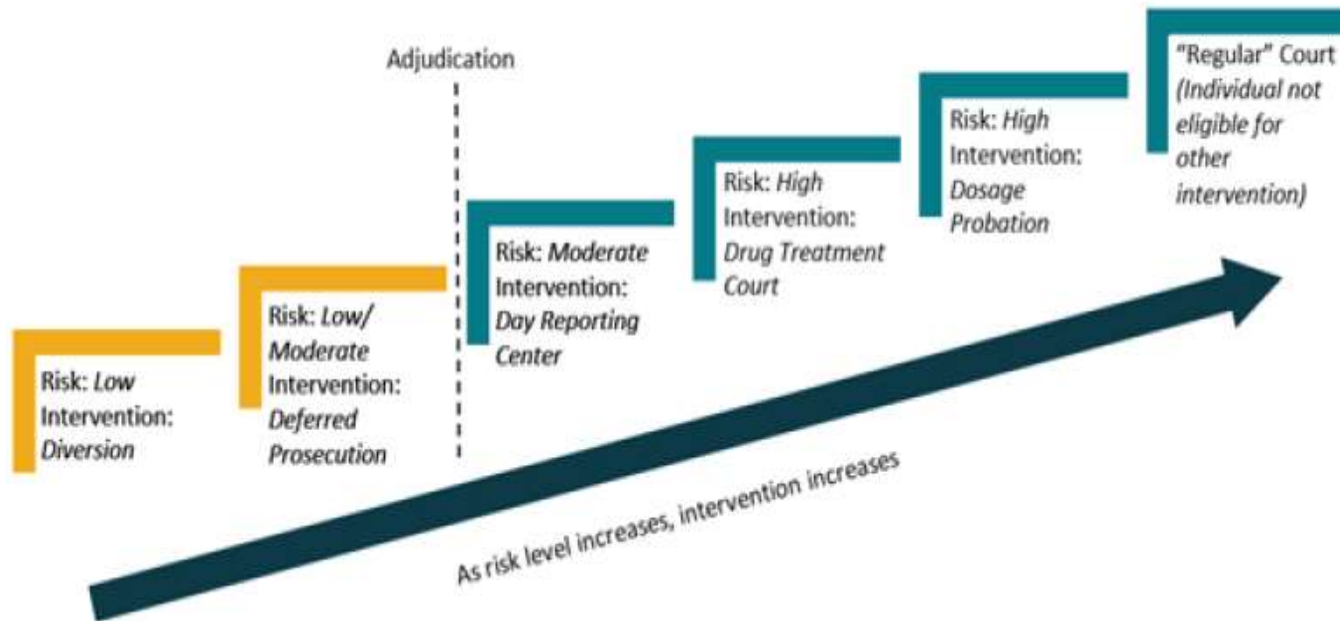


Adopt a universal risk screening tool



Eligibility Driven Largely by Risk

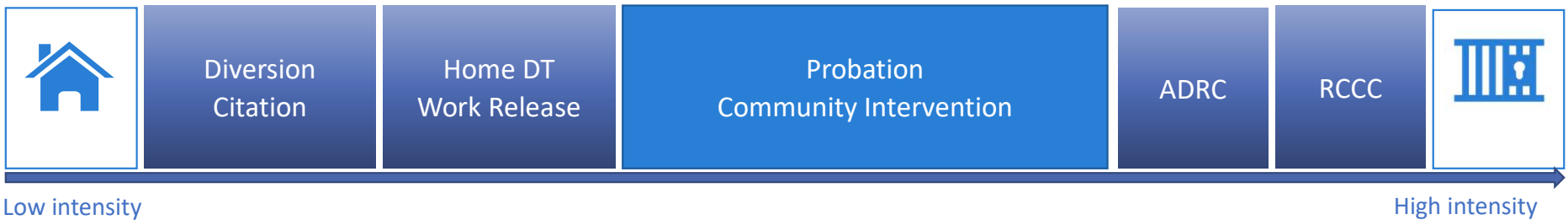
Correlation Between Risk Level and Level of Intervention





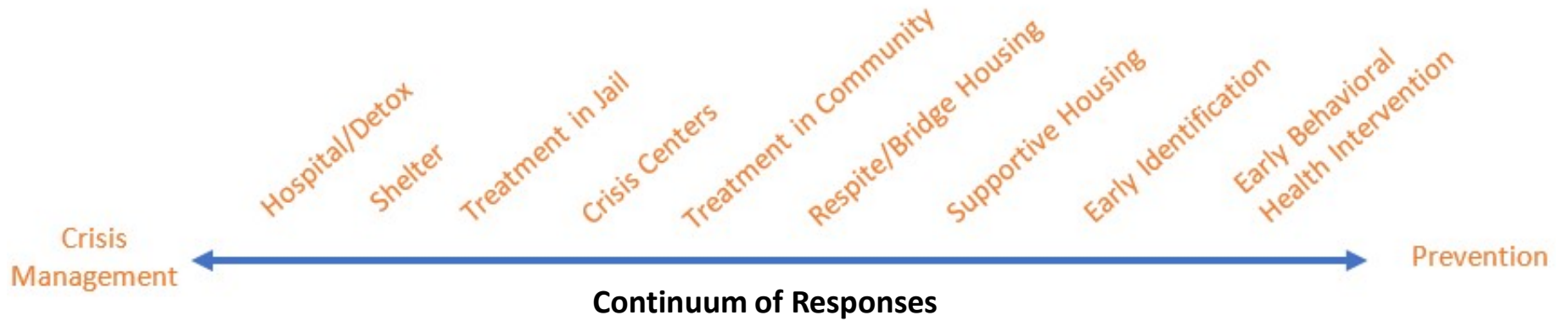
Expand existing, successful programs

Continuum of Programs





Increase support services





Put in place an ongoing continuing education series

- Assessments (use, benefits, limitations, challenges)
- Effective pretrial principles (research findings)
- Programs that work; don't work – and why
- Importance of dosage and what counts toward dosage
- Use of fidelity assessment tools
- Supervision effectiveness and length
- Use of punishers and rewards/incentives



740

The average number of fewer people in the jail daily